



CANON SOLUTIONS AMERICA

What's More Likely?

The Canon imageRUNNER ADVANCE Series was awarded BLI's
2020 Copier MFP Line of the Year

During testing, **2,115,000 impressions** were run on
imageRUNNER ADVANCE models, with only **3 misfeeds**.

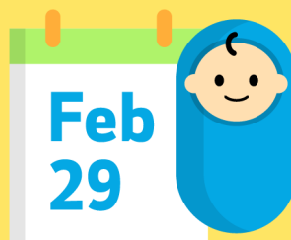
That's a rate of only **1 in 705,000 prints!**



Compared to those odds, you're more likely to

Be born on leap day

1 in 1,461



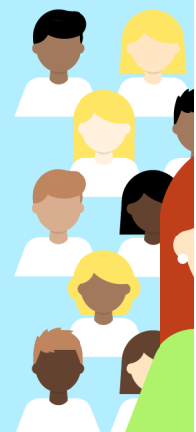
1

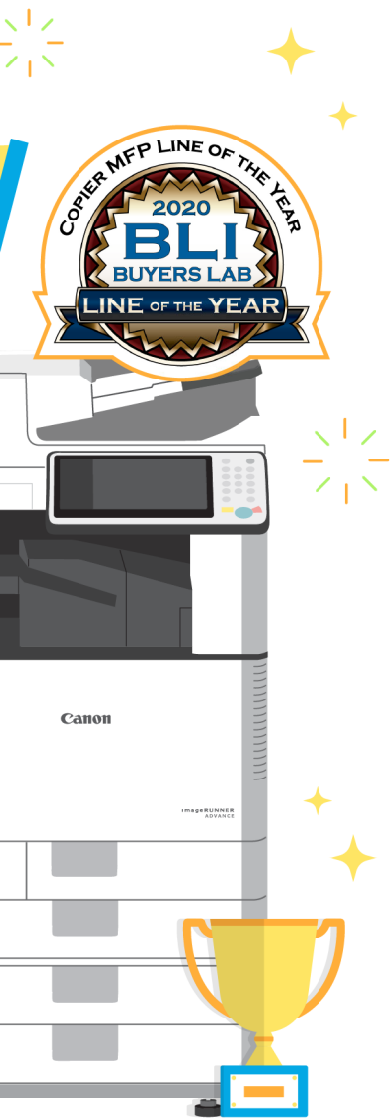
Be ambidextrous

1 in 100

Be a redhead

1 in 200





0...





3

Find a pearl in an oyster

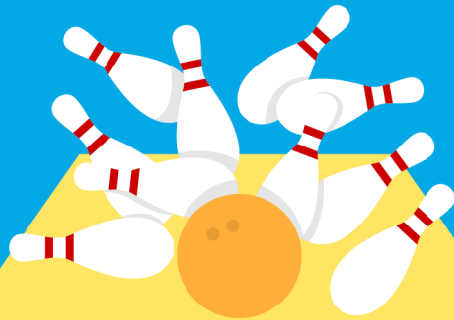
1 in 10,000



5

Bowl a perfect game

1 in 11,500



6



Find a four-leaf clover

1 in 10,000

Make a hole-in-one on a par-3 hole

1 in 12,500

Be dealt a royal flush

1 in 649,740

When it comes to keeping your business running, don't take chances. Choose the award-winning **imageRUNNER ADVANCE** product line.

For more information about Canon's awards, visit csa.canon.com/enterprise

1. medicaldaily.com/leap-year-psychological-effects-375317

2. livescience.com/26633-redhead-dna-gene.html

3. rd.com/culture/facts-ambidextrous-people/

4. msn.com/en-in/lifestyle/smart-living/things-more-likely-to-happen-than-winning-the-lottery/ss-AAoJmxX#image=12

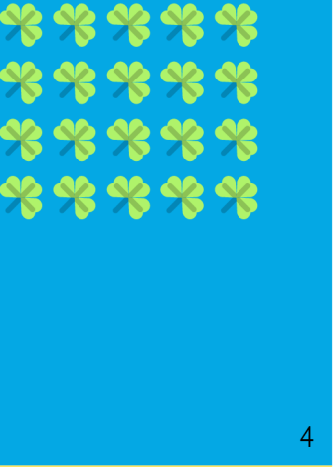
5. nypost.com/2018/12/22/another-pearl-found-inside-restaurant-oyster/

6. Based on amateur bowler.: golfdigest.com/story/records-rarities-the-unlikely

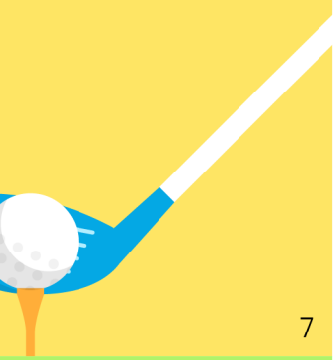
7. Based on amateur golfers. bostonglobe.com/metro/2017/08/24/these-extremely-rare-things-are-more-likely-happen-you-than-winning-powerball-jackpot/pq0VeHn5PpAWKJhrP310nK/story.html

8. thoughtco.com/probability-of-being-dealt-a-royal-flush-3126173

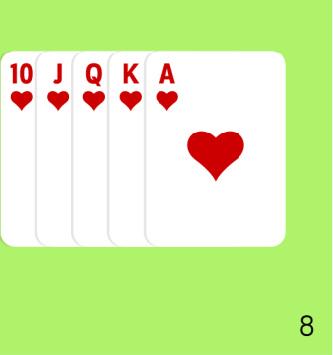
Based on lab testing done by Buyers Lab (a division of Keypoint Intelligence), an independent authority for the document imaging industry. Over a period of several weeks, BLI techs run proprietary reliability ease of use, pro replicate real-world and worst-case scenarios. Engines are reliability tested using BLI's variable test schedule simulating low and high-volume environments. Canon and imageRUNNER are registered trademarks of Canon Inc. trademarks or trademarks in other countries. Nothing herein should be construed as legal or regulatory advice concerning applicable laws; customers must have their own qualified counsel determine the feasibility of a solution compliance. Not responsible for typographical errors.



4



7



8



ductivity and workflow tests designed to
in the United States and may also be registered
on as it relates to regular and statutory

