



CANON SOLUTIONS AMERICA

Use Your Windows® PC To Operate The MFP With Canon Remote Operation Viewer

Helping To Minimize Touch-Points

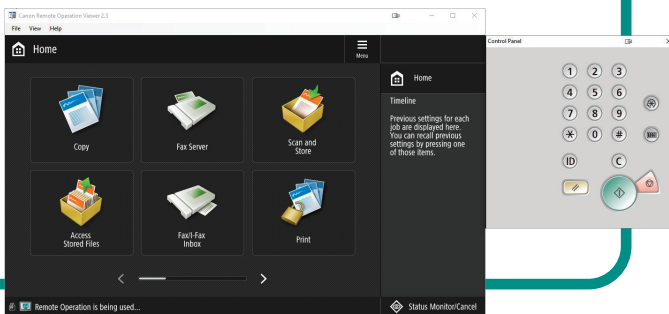


Canon Remote Operation Viewer

Operate your imageRUNNER ADVANCE and imagePRESS Lite device from the convenience of your own Windows PC

Get it **FREE** at csa.canon.com/enterprisesolutions.

Just download the software from the
device pages.



Limit device contact by using the Canon
Remote Operation Viewer from your PC.

- Copy and select finishing options
- Scan and Send
- Fax
- Works with Authentication
- And More!



Manage the device remotely and help
troubleshoot device issues.

- Change Device Settings
- View Status and Monitor Consumables
- Look Up Device Counters
- And More!

Note: The Remote Operation Viewer is a tool for device users to limit contact with imageRUNNER ADVANCE and imagePRESS Lite C165 devices. Administrators can access the Remote User Interface to change access controls and other fleet management features.



Share the Canon Remote Operation Viewer instructions with employees who want to limit contact with imageRUNNER ADVANCE and imagePRESS Lite C165 devices.

Get started with Canon Remote Operation Viewer

1

Head to csa.canon.com/enterprisesolutions.



2

Choose an imageRUNNER ADVANCE or imagePRESS Lite product, scroll down, and select "**Drivers & Downloads.**"



Drivers & Downloads

3

Click on the "**Software**" tab to download and install Remote Operation Viewer.

Software

4

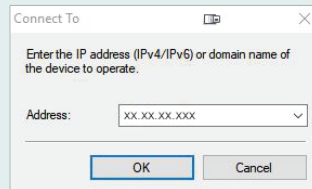
Once installed on your PC, open **Remote Operation Viewer**.



Canon Remote Operation Viewer

5

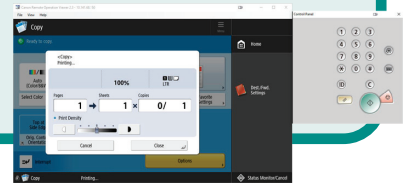
Enter **IP Address** of the MFP (obtain this from your MFP administrator).



6

Now **operate the MFP** as if you were standing in front of it!

- Copy
- Scan and Send
- Fax
- And More!



Note: Document assumes the Remote Operation Viewer and MFP are on the same network and that the remote operation feature has been activated by an administrator. For information on how to activate the remote operation capability within the imageRUNNER ADVANCE or imagePRESS Lite settings, see the device eManual. Only one remote connection can access an MFP at a single time. Operation Viewer operates in the following system environments only: Windows 7 (32-bit or 64-bit)/Windows 8 (32-bit or 64-bit)/Windows 8.1 (32-bit or 64-bit)/Windows 10 (32-bit or 64-bit)/Windows Server 2008 (32-bit and 64-bit)/Windows Server 2012 (64-bit)/Windows Server 2016 (64-bit).

For more information, call 1.800.815.4000 or visit csa.canon.com/enterprisesolutions

Canon
CANON SOLUTIONS AMERICA



Canon, imageRUNNER, and imagePRESS are registered trademarks or trademarks of Canon Inc. in the United States and may also be registered trademarks or trademarks in other countries. All other referenced product names and marks are trademarks of their respective owners. Specifications and availability subject to change without notice. Not responsible for typographical errors.
©2021 Canon U.S.A., Inc. All rights reserved.

0321RI-CSP-ROV-PDF-IH
CSA-20-0496-4764