

MAKING PRINTS USING THE PRINT DRIVER


Printing Your First Label on Your Canon Label Printer Device

The following steps are designed to help you print your first label on your new Canon printer. For a sample label, please visit the Canon Solutions America website and download a label to print. csa.canon.com/labelprinters

Select the label for your printer model and use the specified media provided in the media kit.

Opening the Printer Driver Setup Window

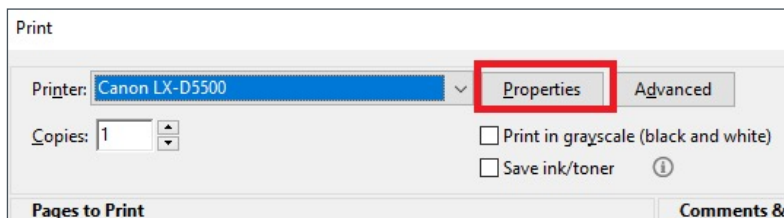
1. Select as described below:

- a. **Windows 10:** Right-click on start (or search icon)  and then select Control Panel -> Hardware and Sound -> Devices and Printers.
- b. **Windows 8.1:** From Desktop Charms, select Settings -> Control Panel -> Hardware and Sound -> Devices and Printers.
- c. **Windows 7:** Select the Start menu -> Devices and Printers.

2. Open the PDF with your PDF viewer, such as Adobe Acrobat.

3. In application, open with PDF, go to File > Print.

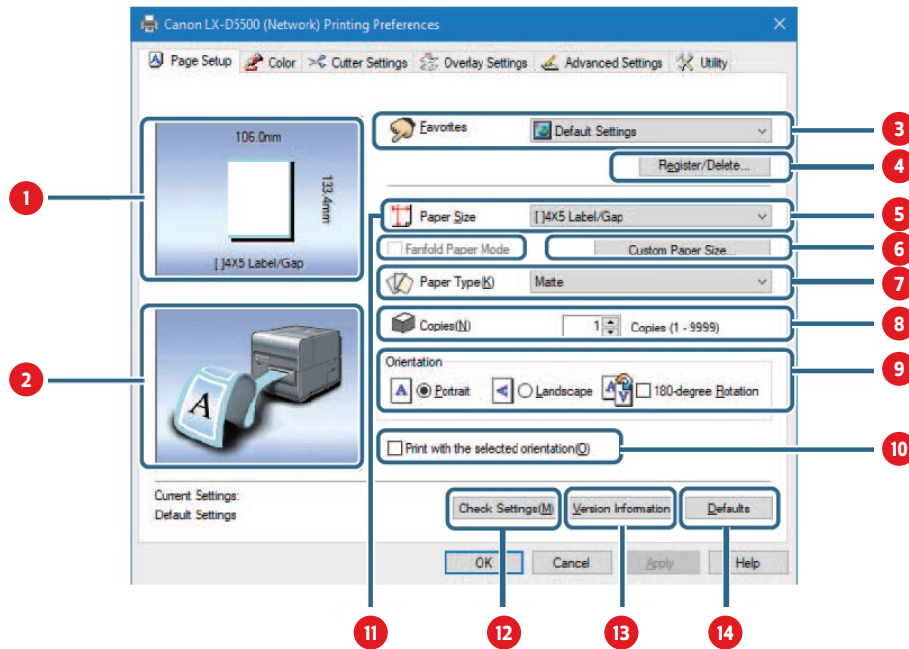
4. In the Print screen, click "Properties."



5. The [Printing Preferences] printer driver setup window will appear.

6. After Preferences are established, Click OK.

7. Click [Print] in the Print dialog box and Printing will begin.



1 Paper Size Preview

The current paper size is displayed in a preview.

2 Print Orientation Preview

Paper orientation for printing is displayed in a preview.

3 Favorites

Register commonly used print settings.

4 Register/Delete

Register or delete Favorites.

5 Paper Size

Select a paper size.

6 Custom Paper Size

Select an optional paper size.

7 Paper Type

Set a paper type.

8 Copies

Set the number of copies to print.

9 Orientation

Set the orientation of printing on the paper.

10 Print with the selected orientation

Click the check box ON when printing with the selected [Orientation].

11 Fanfold Paper Mode

If [Special Settings] has been configured to use fanfold paper, the check box appears checked.

12 Check Settings

Displays the current print settings.

13 Version Information

Displays the printer driver version and copyright information.

14 Defaults

Reset the [Page Setup] tab to its defaults.

Changes to paper size, paper type, number of copies, page orientation, and more can be adjusted in the [Page Setup] tab of [Printing Preferences] window.